



PROPERTY ARMOR

PRO Series P2 Slammer

MATERIAL

Frame

1.5" x 1.5" x 1/8" Steel Angle Iron
Base Flange 1.5" with 1/2" Anchor Hole on four sides

Center and Top Reinforcement Band

1.5" x 1/8" Steel Flat Bar

Expanded Metal

3/4 #13 Flat Expanded Metal

Finish:

Painted Models— Primed Welds and Rust Inhibitor Paint
Powder Coated Models— Per Customer Specifications

Construction:

MIG Welded Filet .035 E71T-GS A5.20

Lid: Lock Housing 4"RD x 1/4"- Accepts STD Puck Lock
Hinge Pins 1/2" Round Stock / Barrels 1/2" RD

DIMENSIONAL DATA

Application Specific

FEATURES

Notched Corner for Easy Installation Around Line Set
Expanded Metal Helps Prevent Unauthorized Intrusion
Can Be Anchored In The Ground or To A Concrete Pad
Heavy Duty Lock Housing for added Intrusion Prevention

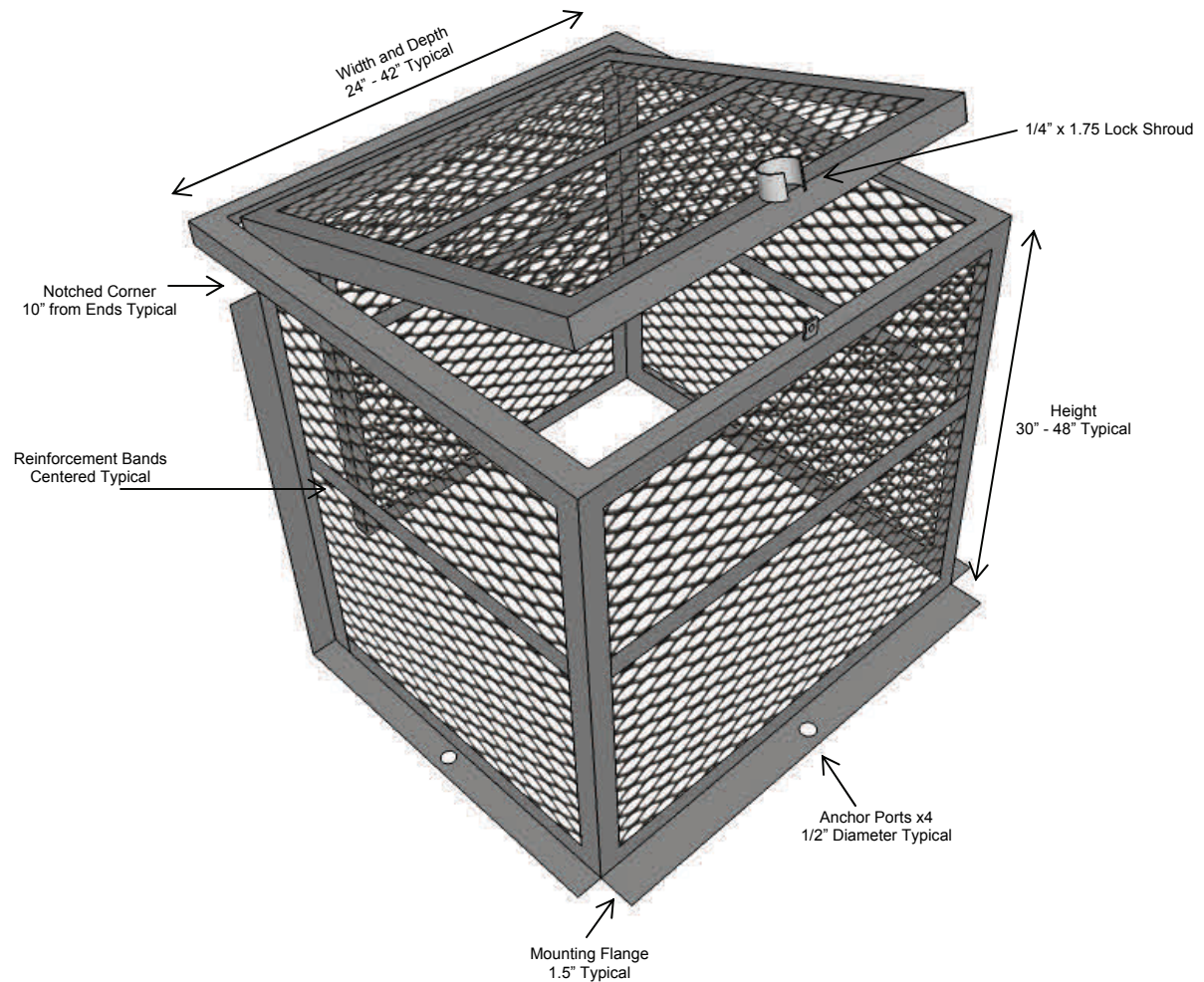
Job Name: _____

Location: _____

Engineer: _____

Contractor: _____

Date Submitted: _____



WWW.PROPERTYARMOR.NET

TOLL FREE 855-858-5757

PROPERTY ARMOR 2910-4 WEST BEAVER STREET JACKSONVILLE, FL 32254 P 904-356-0092 F 904-356-0093